



In fieri, in becoming, 되고 있는, à devenir, aan de gang, em tornar-se, deviniendo.



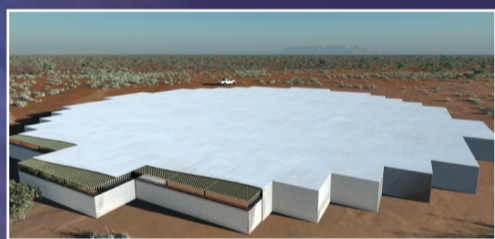
# Intelligent Fast Interconnected and Efficient Devices for Frontier Exploitation in Research and Industry.

## January 20-22, 2014

at the **Universidad Carlos III de Madrid, Campus Puerta de Toledo, Madrid (Spain).**

Organizer: **Departamento de Bioingeniería e Ingeniería Aeroespacial.**

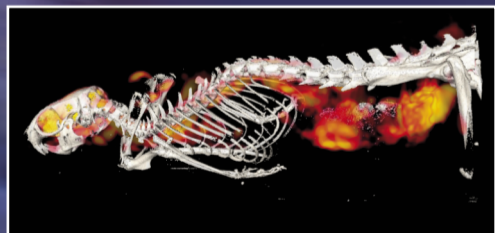
### ASTROPHYSICS



### PARTICLE PHYSICS



### MEDICAL PHYSICS



### TELECOMMUNICATIONS



## WORKSHOP VISION

INFIERI is a training network for the development of intelligent devices and tools for cutting-edge applications in Astrophysics, High Energy Physics, Medical Physics and Telecommunications. The workshop is open to all INFIERI participants.

**INFIERI (FP7-PEOPLE-2012-ITN, GA 317446).**

#### Partnership:

CNRS-APC & INL-Fr, Nikhef-NL, LIP-Pt, INFN-Pisa-It, Scuola Superiore Sant'Anna-It, Universidad Carlos III de Madrid - Sp, Oxford University-UK, RAL-STFC-UK, Liverpool University-UK, Philips-NL, THALES-TRT-Fr.

#### Associated Partners:

Seoul National University-Kr, SAMSUNG SAIT-Kr, Fermi National Lab-USA, Purdue University-USA, TEZZARON-Semiconductor-USA, SEDECAL S.A-Sp, CAEN SpA-It, University of Amsterdam-NL, Bristol-UK, Leicester-UK and European Research Center: CERN-CH.

Workshop web site: <http://biig.uc3m.es/inferi/>

